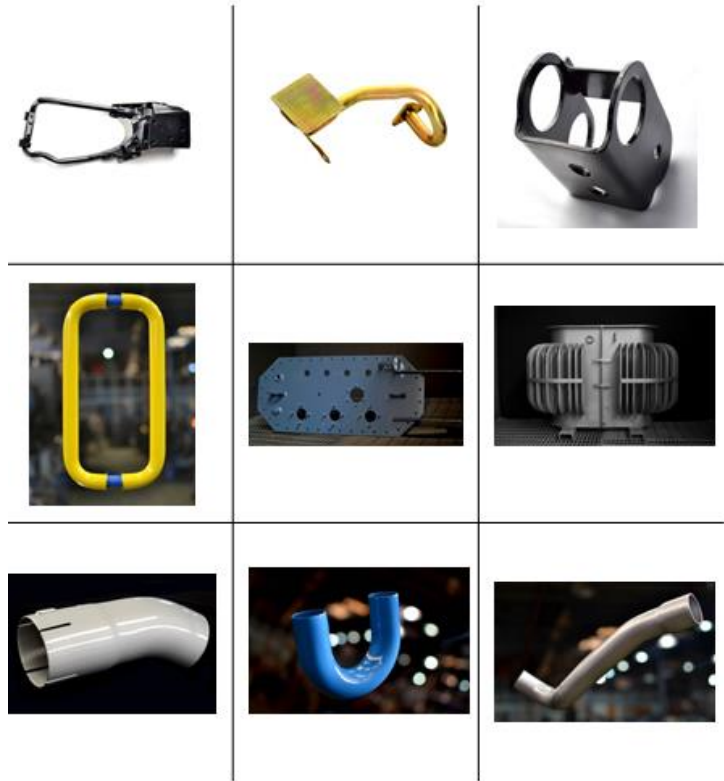




Industries (SMC-Private) Ltd.

Manufacturer of Stamping Parts | Tube Components | Exhaust Pipes
Mufflers | Transformer Tanks | Assembly Parts | Customized Parts
For Automobile | Energy | Construction | Locomotive



An Engineering Company

About Us

AL-HADEED Industries (Private) Limited, a diversified engineering Company, have been manufacturing customized products (e.g. Stamping Parts, Tube Components, Exhaust Pipe & Mufflers, Distribution Transformer Tanks & Fabricated Parts for various national & multinational customers with the help of wide range of In-House facilities, trained, experienced & dynamic team with manufacturing and incorporating appropriate control methodologies to ensure products which meet the required specifications and expectation of our valued customers in the area of quality, cost effectiveness and on time delivery.

We, since our establishment (1988) are continuously growing year by year through expansion in plant, installation of Machinery including state of the art CNC Machines, adopting Lean Manufacturing Tools & modern techniques & implementation of quality management system to meet customer satisfaction.

Quality Policy

AL-HADEED Industries (SMC-Pvt.) Limited abides by the well recognized production methods and delivers the best values to its customers through differentiation, cost reduction and fast response and all of these are achieved by;

- **Demanding** high quality raw materials from our suppliers
- **Developing** stringent in-house checks and quality assurance system
- **Providing** excellent services and response to our customers through flawless range of products and services
- **Meeting** customer's requirements by applying futuristic technology and strong competently relationship with the customers
- **Attaining** the complete client satisfaction by fulfilling our commitment
- **Complying** of relevant industrial & other applicable legal / regulatory standards.
- **Sustaining** an efficient and dedicated workforce through teamwork to overcome the competitive challenges in the field
- **Committing** the continual improvement in our management system

Stay Head Lamp



Bracket S/A



Stay Pipe



Pipe Air Intake



Outside Mirror



Bracket Splash



Scoop



Pipe S/A



Core Values

Human Capital

Our Business success is based on our people
 Health & Safety at the Work place
 Professional Attitude
 Communication
 Team Spirit
 Integrity

Business Excellence

We are pursuing the continuous improvement of our performances in order to achieve optimal business result.
 High Safety & Quality Standards
 Competitive advantages
 Continuous Innovation
 High profitability
 High Efficiency

Society

We elevate our corporate social responsibilities in daily practice.
 Socially responsible development
 Safety & Environmental
 Conscience Respecting the environment
 Gaining the trust of the society around us.

Door Handle



Muffler



Muffler



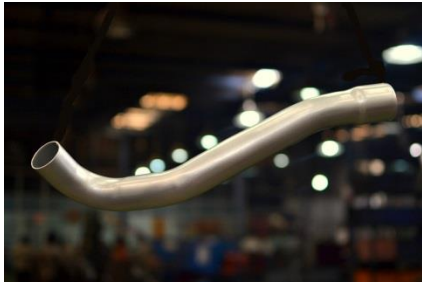
Fuel Injector Pipe



Low Pressure Pipe



Exhaust Pipe



Exhaust Tail Pipe



Pipe Water Intake



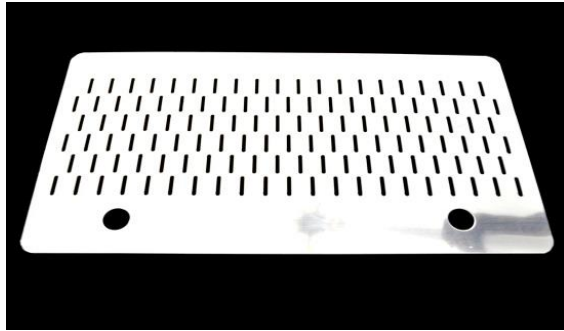
Pipe Tube



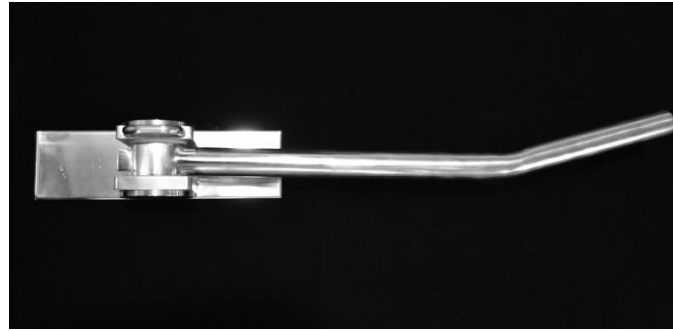
Mission Statement

Our mission is to meet and exceed customers' expectations by providing most efficient & reliable products & services at competitive price with the core focus on honesty, integrity & maintainability for the highest level of ethical conduct at all times.

Mesh Plate



Retractable Handle



Deck Fuel Tank



Bkt Acc.Control Detro

Break Booster Plate

Bkt Acc. Control Cable

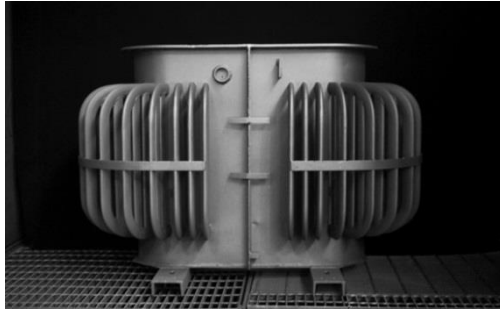
Support Fuel Tank



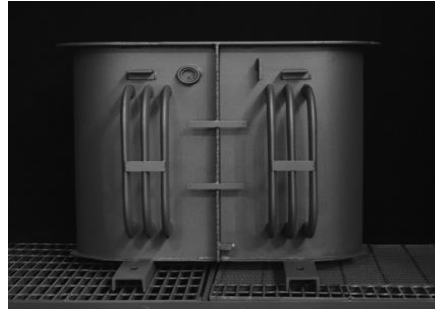
- 2008** Sole Proprietorship to Private Limited
- 2007** Land Acquired in DSU (Area 1.08 Acers)
- 2006** Induction of CNC pipe Bending Facility
- 2004** Start Transformer Tanks & Dedicate SITE
- 2001** Entered in Business of Commercial Vehicle
- 1996** Business Started With Al-Ghazi Tractors
- 1991** Started Business of Sheet Metal Parts

- 2014** Construction Started at SITE
- 2013** Induction of Robotic Welding
- 2012** Started Export to BFG
- 2011** CNC Punch & S. Blasting Facility
- 2010** Land Acquired in SITE
- 2009** Servo Base CNC Pipe Bending Induction

DT Tank 100 kVA



DT Tank 25 kVA



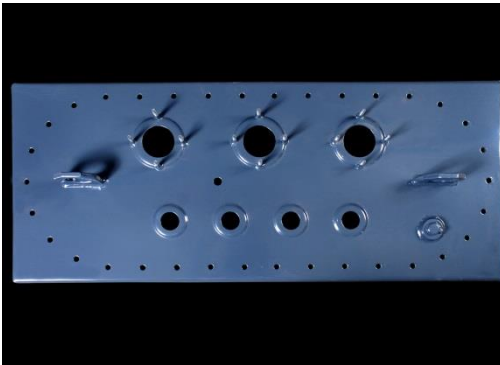
Power Transformer 1250 kVA



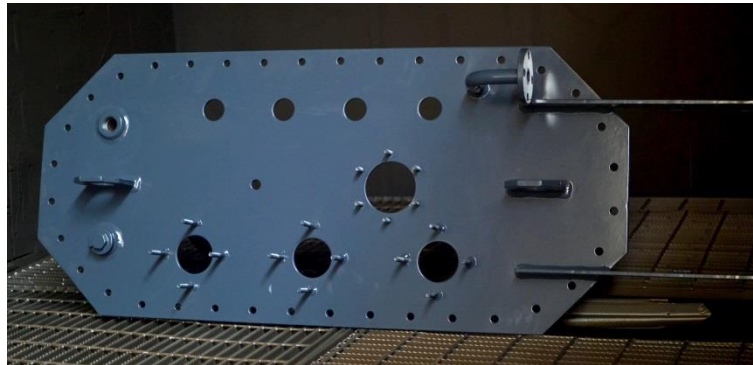
Litter Bin



Top Plate 200 kVA



Top Plate 250 kVA



LT Small Chamber



Strength

AL-HADEED is highly committed to fulfill customers' requirements with following core competencies;

- Adaptability and commitment for continuous improvement
- Highly motivated and result oriented team
- Good 5S and quality improvement culture
- Technical Expertise: The ability to demonstrate depth of knowledge and skill in a technical area.
- Developing others by delegating responsibility and coach them to develop their capabilities

Facilities

CNC Bending Shop



CNC Punching



Press Shop



MIG Welding



Shot Blasting



Paint Shop



Clients





www.al-hadeed.com

434, Garden East Nishter Road,
Karachi - Pakistan

info@al-hadeed.com

T +92 21 32238388

F +92 21 32238387